

# Playford Civic Centre

## Venue guide





# Function rooms



Modern and flexible, the Playford Civic Centre's function rooms feature ideal spaces for large scale events with up to 400 guests, including:

- graduation ceremonies
- seminars
- conferences
- exhibitions

Function room hire can include access to a large stage with draping, the venue sound system, projectors and a full commercial kitchen.

*\*We are unable to accommodate weddings in the function rooms.*



Room capacity			
	Theatre	Banquet	Cabaret
One room	180	120	90
Two combined rooms	400	240	192

Price per day (including GST)		
Prices below include provision of a single theatre technician *		
	Mon-Fri	Weekend
One room	\$1342	\$1870
Two combined rooms	\$1980	\$2530
Access beyond 8 hours	\$161.40	\$161.40
	With appliances	Without appliances
Commercial kitchen access	\$330	\$132

\* Not for profits/ community hirers may be eligible for a 10% discount  
 \* Cost recovery will be applied for security staff for after-hours events  
 \* Technician costs can be removed from the room hire cost at the discretion of Council

*\*For any additional requests, please contact our staff and we will be happy to work with you to arrange a package that suits your event*

## Our function rooms feature



Space for up to 500 guests



Reconfigurable set-ups to meet your needs

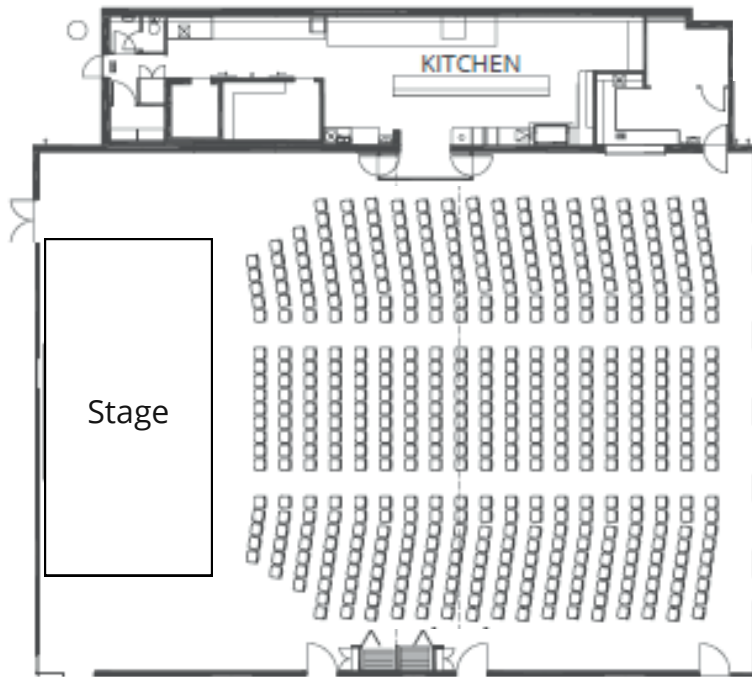


Premium light, sound and AV equipment

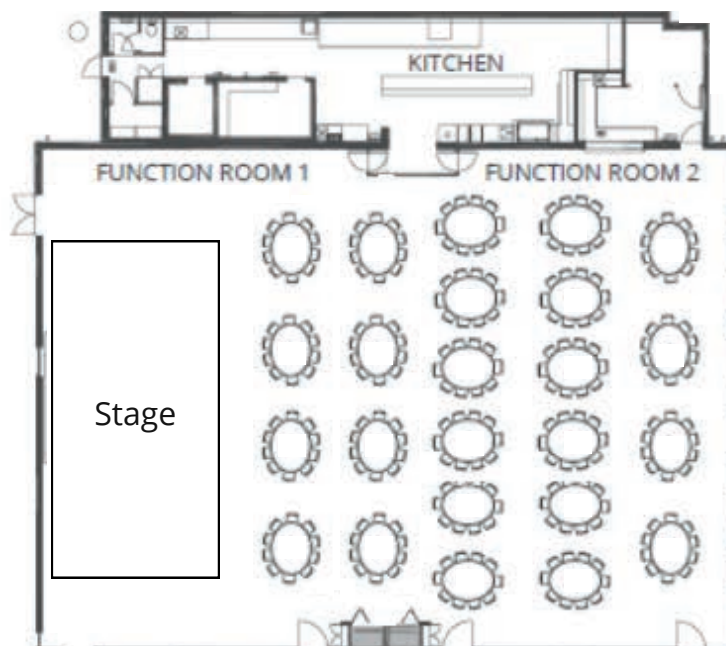


Access to a full commercial kitchen

# Function rooms layout examples



Theatre style with stage



Cabaret style with stage

# Meeting rooms

Our spacious meeting rooms are perfect for businesses and community groups looking for an affordable place to meet clients in the heart of the Elizabeth CBD.

Ideal suited for between 12 and 80 guests, the meeting rooms typically host:

- Training sessions
- Workshops
- Job interviews
- Seminars

Room capacity			
	Theatre	U-Shape	Boardroom
One room	40	12	12
Two combined rooms	80	30	22

Commercial rate (inc. GST)		
	Per hour	Per day
One room	\$84.80	\$333.60
Two combined rooms	n/a	\$424.30

**A community rate is also available.**

For more information, contact our team on 8256 0500 or [theatre@playford.sa.gov.au](mailto:theatre@playford.sa.gov.au)



## Our meeting spaces feature



Space for  
up to 80  
guests



Reconfigurable  
set-ups to meet  
your needs

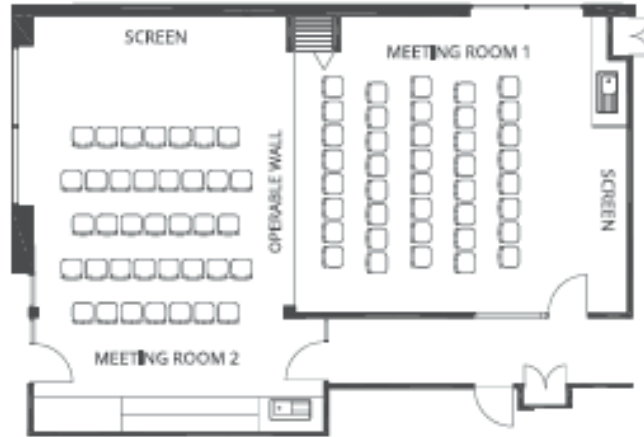


Access to  
digital  
projectors

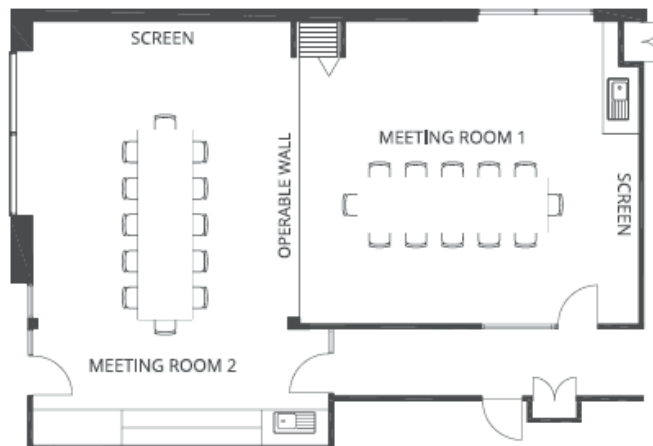


Abundant  
natural light

# Meeting rooms layout examples



Theatre style



Boardroom style



U-shape style



# Location



The Playford Civic Centre is conveniently located close to public transport and is adjacent to northern Adelaide's largest shopping destination.

## Getting here

### Address

10 Playford Boulevard  
Elizabeth SA

### By train

The Playford Civic Centre is less than 30 minutes from the Adelaide CBD and just five minutes from Salisbury via the Gawler railway line.

### By car

Free parking is available directly adjacent to the Playford Civic Centre. Undercover parking is also available at the multi-story Windsor Carpark. Prices for the Windsor Carpark can be found at:  
<https://www.playford.sa.gov.au/explore/getting-around/public-and-on-street-parking>

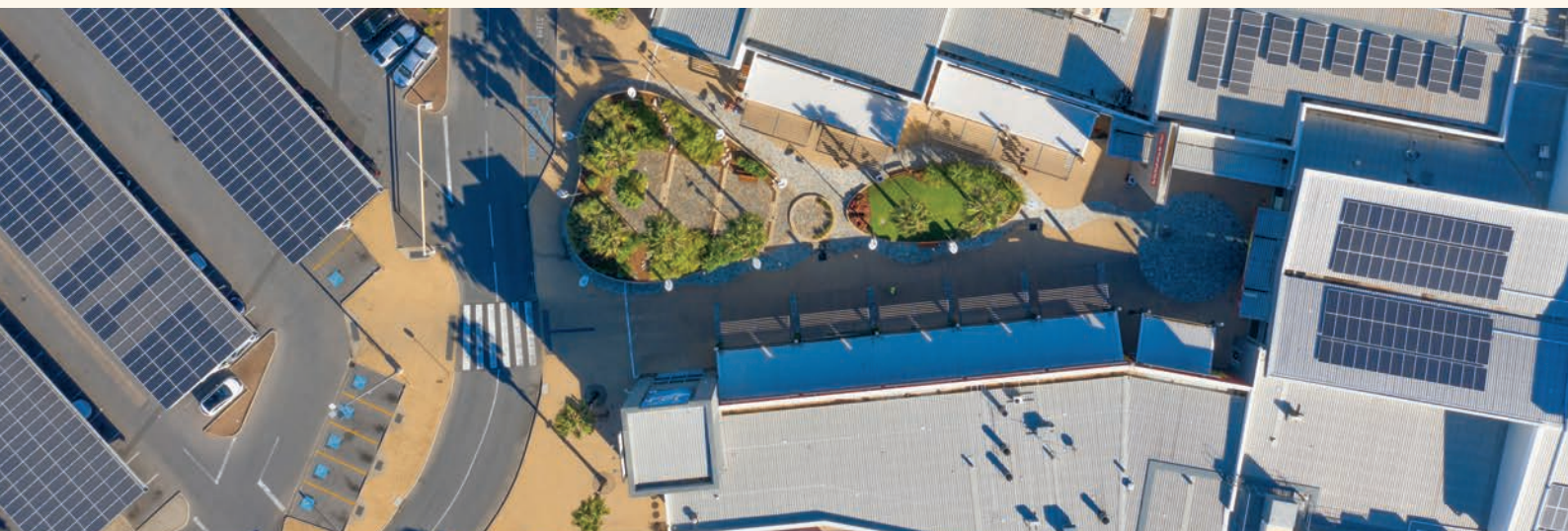
## Nearby amenities

### Casual dining

- Carl's Junior
- Cafe De Vili's
- Delicia
- Dumpling Union
- Fasta Pasta
- Gongcha
- Hungry Jacks
- KFC
- Kintaro Sushi
- Little Ban Ban
- McDonald's
- Red Chilli
- Schnithouse
- Subway
- Zambrero
- Zitto

### Community

- Elizabeth Aquadome Swimming Centre
- Fremont Park
- Shedley Theatre
- Playford Library







## Playford Civic Centre

[theshedley.com.au/functions](http://theshedley.com.au/functions)

8256 0500

[theatre@playford.sa.gov.au](mailto:theatre@playford.sa.gov.au)

10 Playford Boulevard

Elizabeth SA